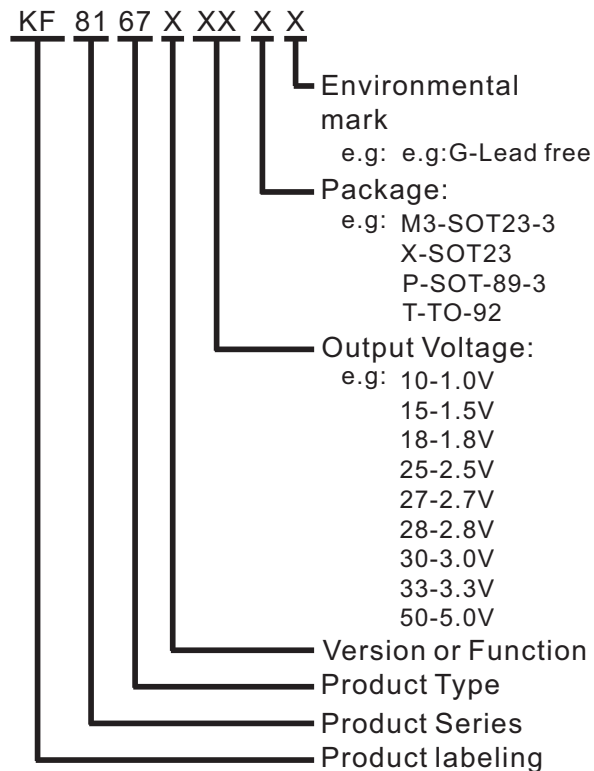


Low-power, low dropout voltage regulator IC KF8167

General Description

KF8167 series are highly precise, low power consumption, positive voltage regulators manufactured using CMOS technologies. The series provides large currents with a significantly small dropout voltage. The series is compatible with low ESR ceramic capacitors. The current limiter's foldback circuit also operates as a short protect for the output current limiter and the output pin.

Selection Guide



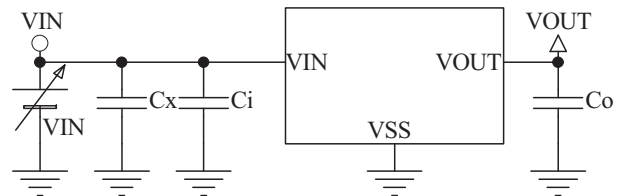
Features

- Input voltage: up to 6 V
- Output voltage range: 1.0V~5.0V
- Highly Accurate: $\pm 1\%$
- Low power consumption: 4 μ A(TYP.)
- Large output current: 300mA ($V_{IN}=4.3V, V_{OUT}=3.3V$)
- Dropout voltage: 0.11V at 100mA and 0.24V at 200mA Excellent Input Stability
- Be available to regulator and reference voltage
- Packages: SOT23, SOT23-3, SOT89-3, TO-92

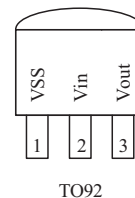
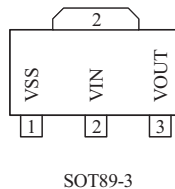
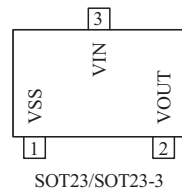
Typical Application

- Battery powered equipment.
- Mobile phones.
- Communication tools.
- Portable games.
- Portable AV systems.
- Cameras, Video systems.
- Reference voltage sources.

Typical Application Circuit



Pin Configuration



Pin Assignment

KF8167Axx				KF8167Bxx	Pin Name	Pin Function
M3	P	T	X	P		
SOT23-3	SOT89-3	TO-92	SOT23	SOT89-3	VSS	Ground
1	1	1	1	2	VOUT	Output
2	3	3	2	1	VIN	Input
3	2	2	3	3		